

E-Browser **Help** Wizard

Created By **Amr Sohil**

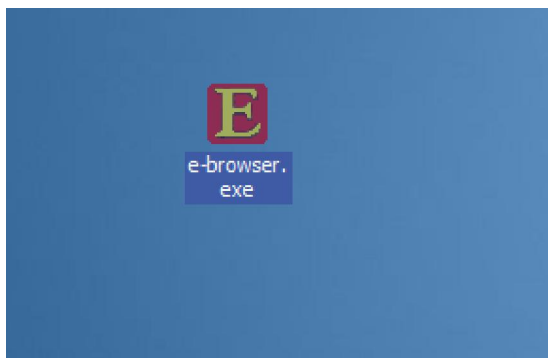
(E-computeen Administrator)

How to **USE** E-Browser

First Step:

Click on the Program Icon Double Click.

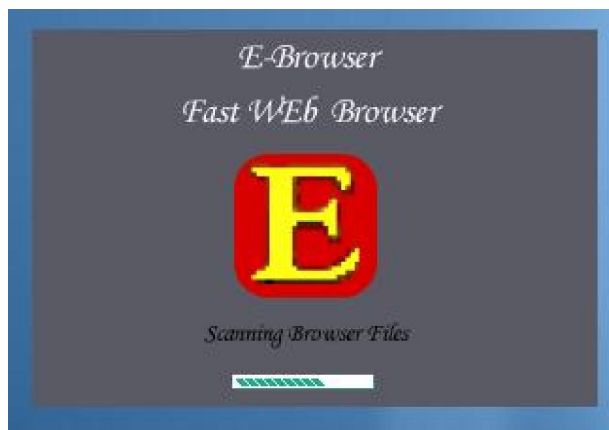
(Fig 1)



Second Step:

Wait Until the Browser Load

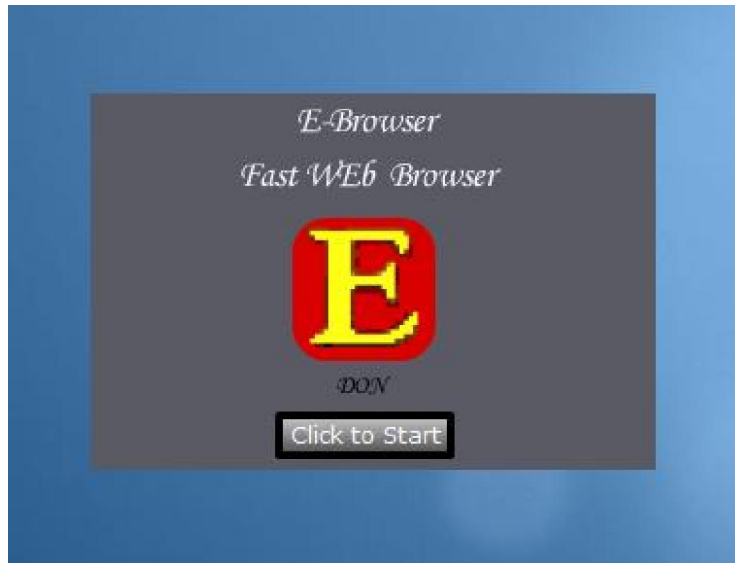
(Fig 2)



Third Step:

A Button Will Be Shown As Fig.3 Click On It

(Fig 3)



Fourth Step:

E-Browser Interface Will Be Shown As Fig.4

{ Fig.4 Contain Explanation ON the Fig }



Fifth Step:

We Will Start With Tabs.

With Tabs You Can:

- *Use One E-computeen Explorer Window to view all your WebPages.
- *Open Links In background tab while viewing the page you're on.
- *Save and open multiple WebPages at once by using Copy/Past Form Browser.

To Get Started:

- *Click on the tab you Want to open .
- *Click on stop button to stop using that tab
(Fig 5)

